



SUBMINIATURE MICRO SWITCHES

MV7 - SERIES

- Characteristics
- Single Pole changeover.
 - Fine Silver contacts.
 - Snap action mechanism.
 - Silver / Gold plated terminals.
 - Also available with low actuating force.
 - Conform to IEC 1058-1 standard.



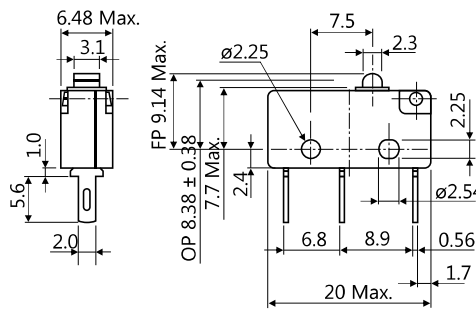
Approval



■ LCSO

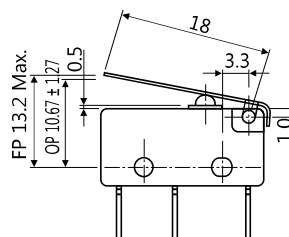
Ordering code **MV7()**

Actuating force 142 gms. (max.)
 Release force 28 gms. (min.)
 Pretravel 0.76 mm. (max.)
 Overtravel Plunger may be depressed until it is flush with the case.
 Movement differential 0.10 mm. (max.)
 Salient features Plain plunger actuator and quick connect tabs.

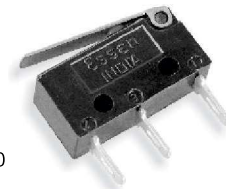


Ordering code **MV7()L7**

Actuating force 50 gms. (max.)
 Release force 7 gms. (min.)
 Pretravel 2.54 mm. (max.)
 Overtravel Plunger may be depressed until it is flush with the case.
 Movement differential 0.38 mm. (max.)
 Salient features Plain Integral lever and quick connect tabs

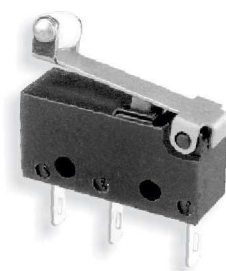
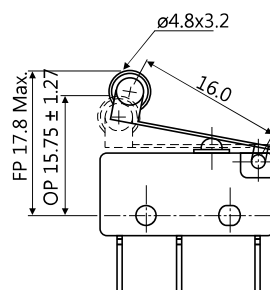


Lever Width 4.0



Ordering code **MV7()R7**

Actuating force 50 gms. (max.)
 Release force 7 gms. (min.)
 Pretravel 2.05 mm. (max.)
 Overtravel Plunger may be depressed until it is flush with the case.
 Movement differential 0.38 mm. (max.)
 Salient features Integral lever with free running nylon roller and quick connect tabs

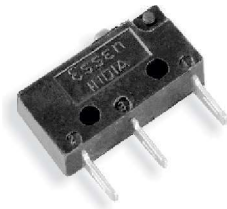
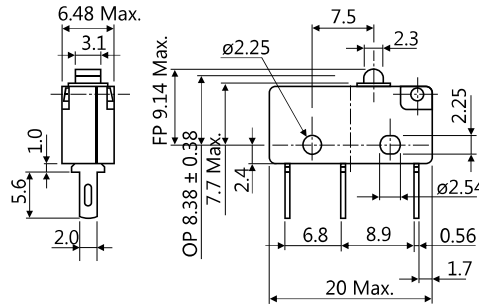




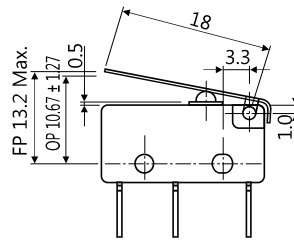
SUBMINIATURE MICRO SWITCHES

MV7 - SERIES

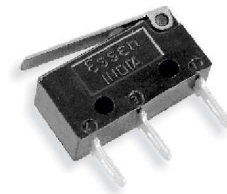
Ordering code	MV7()/LF
Actuating force	50 gms. (max.)
Release force	10 gms. (min.)
Pretravel	0.76 mm. (max.)
Overtravel	Plunger may be depressed until it is flush with the case.
Movement differential	0.10 mm. (max.)
Salient features	Low force, Plain plunger actuator and quick connect tabs



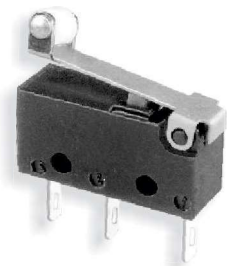
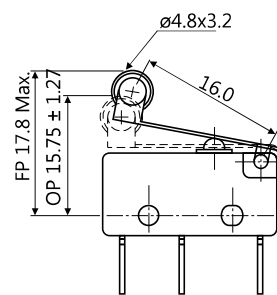
Ordering code	MV7()L7/LF
Actuating force	20 gms. (max.)
Release force	2 gms. (min.)
Pretravel	2.54 mm. (max.)
Overtravel	Plunger may be depressed until it is flush with the case.
Movement differential	0.38 mm. (max.)
Salient features	Low force, Plain Integral lever and quick connect tabs



Lever Width 4.0



Ordering code	MV7()R7/LF
Actuating force	20 gms. (max.)
Release force	2 gms. (min.)
Pretravel	2.05 mm. (max.)
Overtravel	Plunger may be depressed until it is flush with the case.
Movement differential	0.38 mm. (max.)
Salient features	Low force, Integral lever with free running nylon roller and quick connect tabs

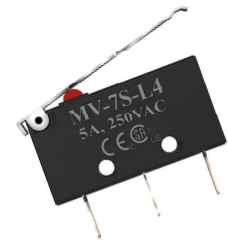
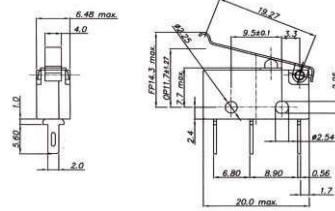




SUBMINIATURE MICRO SWITCHES

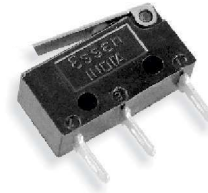
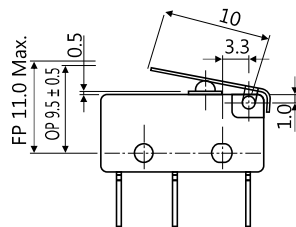
MV7 - SERIES

Ordering code	MV7()L4
Actuating force	50 gms. (max.)
Release force	7 gms. (min.)
Pretravel	2.54 mm. (max.)
Overtravel	Plunger may be depressed until it is flush with the case.
Movement differential	0.40 mm. (max.)
Salient features	Plain Stimulated lever and quick connect tabs



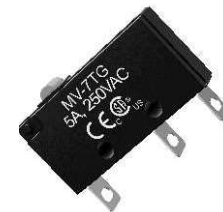
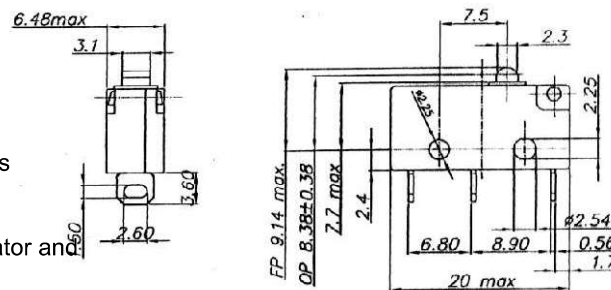
Lever Width 4.0

Ordering code	MV7()L5
Actuating force	100 gms. (max.)
Release force	20 gms. (min.)
Pretravel	1.2 mm. (max.)
Overtravel	Plunger may be depressed until it is flush with the case.
Movement differential	0.30 mm. (max.)
Salient features	Plain Integral lever 10mm long and quick connect tabs



Lever Width 4.0

Ordering code	MV7 T ()
Actuating force	142 gms. (max.)
Release force	28 gms. (min.)
Pretravel	0.76 mm. (max.)
Overtravel	Plunger may be depressed until it is flush with the case.
Movement differential	0.10 mm. (max.)
Salient features	Plain plunger actuator and Solder tags.



ELECTRICAL RATINGS

Load	Ratings
AC	5 A at 250V 2 A at 250V (for low force models.)
DC (resistive)	0.5 A at 125V or 0.25 A at 250V. 0.25A at 125V and 250V (for low force models.)
DC (inductive)	0.06 A at 110V & 0.03 A at 250V. 0.03 A at 110V and 0.02A at 250V (for low force models.)

Note : Place 'S' for Silver plated and 'G' for Gold plated contacts and terminals in bracket () against ordering code of micro switch.

All dimensions are in mm.
Due to continuous improvement in products, we reserve the right to alter specifications without prior notice

www.essendeinki.com